

# CROSSTALK

LUTHERAN CHURCH  
of the  
RESURRECTION

WWW.LCRMARION.ORG

VOLUME 67, ISSUE 2 | FEBRUARY 2026

*"As Jesus was walking along, he saw a man called Matthew sitting at the tax-collection station, and he said to him, "Follow me." And he got up and followed him."*

- Matthew 9.9

## Who disciples you?

I am still processing an article I read last month that suggested that we are all being "discipled" by the various algorithms and media that we consume. The gist of the conversation was that the average Christian consumes about 14 hours per week of online/onscreen interaction which is basically reaffirming and shaping an existing bias. In other words, I (and each of you I'm afraid) are being discipled by narratives that reflect what I want to hear and perceptions that I am comfortable maintaining.

And of course what makes these online/onscreen interactions all the more enticing is that they will often incorporate faith language and images in order to foster their own legitimacy. I'm trying very hard to be aware of this and work intentionally to broaden my exposure - in other words, I resent the fact that I can be so easily influenced!

And this brings me to the Apostle Matthew in the scripture above. There may have been some back story here that we are not aware of, but Jesus in two words, breaks all the controlling narratives of Matthew's life and miracles of miracles, "he got up and followed him." This is the work of spiritual formation. This is the work of Lent. This is the work of the Holy Spirit. In Jesus, we encounter a word that shakes up our preconceived notions and ideologies and moves us toward obedience to Christ.

What is not mentioned is the cost. Think of what Matthew left behind. Think about the uncertainty he faced as a Roman collaborator who walked away from that tax booth in order to follow 'him!' I believe this is the hope we still have in Christ. That his call to follow, can still stir hearts and get us out of our seats in order to seek the Kingdom (From that time Jesus began to proclaim, "Repent, for the kingdom of heaven has come near." Matthew 4.17).

My prayer for myself is that I will never become so comfortable in what I know, that I'm not willing to leave it behind in order to follow Him. I encourage you to take seriously the season of Lent to purposely add devotional time, fasting, prayer and good works - in other words to shake up your personal algorithm a bit and align yourself with the only narrative that saves - and to follow Him!

Peace! Pastor Jeff

## Inside this Issue

Adult Faith .....	5
Children's Ministry ...	4
Confirmation .....	9
Council News .....	11
EDGE Youth .....	9
Fellowship .....	8
Ministry .....	3
Prayers .....	10
Stewardship .....	11
Wee Wisdom .....	11
Worship .....	2

## Follow Us On Social Media:

**facebook**

facebook.com/  
ResurrectionMarion/

**Instagram**

instagram.com/  
resurrectionmarion/

**YouTube**

https://tinyurl.com/  
LCRYouTube

**X** x.com/lutheran\_of

# WORSHIP

~ two Sunday morning services - same message, different music styles ~

**Sunday 8:30 am - Traditional Worship | Sunday 10:30 am - Contemporary Worship**

*Wednesday service: casual evening gathering with its own message + music from a range of worship styles*

**Wednesday 6:00 pm - Evening Worship**

Links are available on our website and social media sites for **Livestream Worship**.

You can receive **email alerts** from LCR about worship and other news.

Click on the 'Visitor Info Request' tab our homepage to sign up - [https://www.lcrmarion.org/new\\_visitor.html](https://www.lcrmarion.org/new_visitor.html)

Alternately, you can contact us at the church office and we will sign you up:

319.377.4689 or [office\(at\)lcrmarion.org](mailto:office(at)lcrmarion.org).

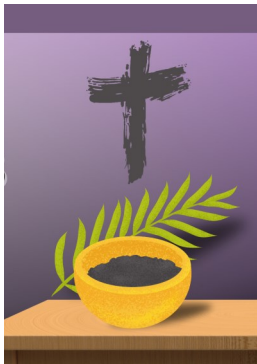
**Text Notifications** - Worship services and other events are subject to change due to a variety of circumstances.

If you would like text notifications of schedule changes / cancellations, call the church office

(319.377.4689) and give us your name & cell number ~OR~ you can sign yourself up on our website -

<https://share.hsforms.com/181uDRkYnTRyGMmuwl3ZiDQ44ay4>

## ASH WEDNESDAY - Morning & Evening Opportunities



*Ash Wednesday - Morning Prayer and Imposition of Ashes*

On **Wednesday, February 18th** the Sanctuary will be open for individual prayer and for folks to receive the imposition of Ashes from **7:30 to 8:30 am**. The mark of the ashes reminds us of our baptism, that we have been marked with the cross of Christ, and becomes a yearly visible sign of the love we have in Christ. They also remind us of our mortality, that we are creatures grounded in all that God has provided. You are free to come and go whenever you please and stay as long as you want for personal prayer and meditation.

Traditional Ash Wednesday Worship will be at **6:00 pm** following our Soup Supper at 5:00 pm. Service will include Holy Communion and the Imposition of Ashes.

## On Our Way Rejoicing - a Lenten Pilgrimage

At its heart, pilgrimage reminds Christians that faith is not static. From Abraham and Sarah leaving their homeland (Genesis 12) to Jesus setting his face toward Jerusalem (Luke 9:51), Scripture presents faith as movement - trusting God step by step.

Whether we travel across continents or walk prayerfully through the season of Lent, pilgrimage reminds us that we are not meant to stand still. We are called to follow. Join us on a pilgrimage of faith this Lenten season as we move with Jesus from his first sermon in Nazareth to the night before his crucifixion in Jerusalem. **All midweek services are at 6:00 pm.** A simple soup supper begins at 5:00 pm.

Wednesday February 18th - Ash Wednesday - traditional service imposition of Ashes

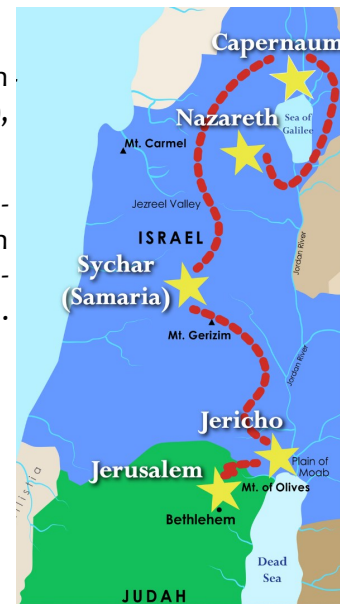
Wednesday February 25th - Nazareth, Luke 4:16-30

Wednesday March 4th - Capernaum, Mark 2:1-12

Wednesday March 11th - Sychar (Samaria), John 4:4-26, 39-42

Wednesday March 18th - Jericho, Luke 19:1-10

Wednesday March 25th - Jerusalem, Luke 22:54-62





# MINISTRY

**MORE MEALS  
for  
Mission of  
Hope**



Help us double our annual meals to Mission of Hope!  
Sign up at [LCRMarion.org](http://LCRMarion.org) to donate food, or donate monetarily.  
Please mark your donation, "Mission of Hope Meals."

## MORE Mission of Hope Meals!

LCR is looking to expand the number of meals we provide to Mission of Hope from every other month to EVERY month. You can help! Sign up at [LCRMarion.org](http://LCRMarion.org) (or scan the QR code below) to donate foods like ground beef, canned baked beans, onions, etc. You may also donate monetarily - please mark your gift "Mission of Hope Meal."



## Blood Drive 2/19/26

**BE PART OF  
SOMETHING  
BIGGER**



ImpactLife

**MARION LUTHERAN CHURCHES BLOOD DRIVE**  
Thursday, February 19; 1:30 - 6:00 pm  
Sign up at [LCRMarion.org](http://LCRMarion.org)



## Quilters Request

Are there any Thrivent members out there? Thrivent gives out two \$250.00 credit cards for grants that members can apply for yearly. You can fill out a grant application and be approved within 30 minutes! **Comforting Hands Quilters** are in need of 80/20 cotton batting. Thank you for all your support of our ministry.





**SIMPLE  
SOUP  
SUPPERS**

Wednesdays during Lent @ 5:00 pm  
Starts Ash Wednesday, February 18  
Sign up to help at [LCRMarion.org](http://LCRMarion.org)

Join us for each Wednesday of Lent at 5:00 pm for our Simple Soup Suppers! We need people to help bring soup and kid-friendly food; and to help set up, clean up, and serve. Please sign up at the link below.

<https://www.signupgenius.com/go/904044CA8AD2EA7FA7-61691484-lcrsoup#/>

## Souper Bowl 2026

Our annual "Souper Bowl of Caring" is underway through **'Souper' Sunday** on **February 8th**. You can drop your soup donations in the donation bins in the gathering space. Monetary donations to The Churches of Marion Food Pantry are also welcome. Last year, you donated 913 cans of soup and \$3,232! Can we beat that in 2026?



**SOUPER BOWL  
OF CARING**

Soup is donated to the Churches of Marion Food Pantry



**BRING CANS OF SOUP BETWEEN JAN 11 AND FEB 8!**

## Jan. & Feb. Mission Envelopes

... will benefit **Feeding Lunches to Youth (FLY)**, a local project of seven churches that strives to meet the needs of students who may not get a healthy meal when school is not in session. FLY provides sack lunches to an average of 400 kids daily at 11 locations. Help us feed hundreds of kids during the summer months and spring break. Thank you!

## CHILDREN'S MINISTRY @ LCR

**save the date for VBS!**

**V**olunteers  
**B**ring  
**S**uccess

**We need  
YOU!**

VBS and Day Camp need your help! Mark these dates in your calendar and reach out to Jessi ASAP to get on the volunteer list so we can begin planning!

**VBS for PK-1<sup>st</sup> Grade**   **Day Camp for 1<sup>st</sup> -6<sup>th</sup>**  
**July 7<sup>th</sup> -10<sup>th</sup>**   **Aug 2<sup>nd</sup> -7<sup>th</sup>**

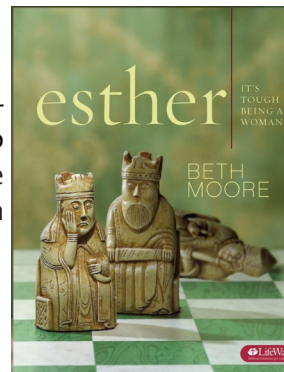
contact jessi lau via email at [childrens@lcrmarion.org](mailto:childrens@lcrmarion.org)



# ADULT DISCIPLESHIP

## “Esther - It's Tough Being a Woman”

For our Lenten Discipline, LCR women are undertaking Beth Moore's study of Esther. It is a 10-week study that walks us through the Old Testament Book of Esther. It includes a 1-hour video of Beth's teaching and homework. This study is led by Kelly Frohner and Heather Grice. We meet in the YAC on **Tuesdays between February 3rd and April 7th**. Morning sessions are from **9:00-10:30 am** and the evening option is from **6:30 - 8:00 pm**.



## Matthew - a Gospel for the Church

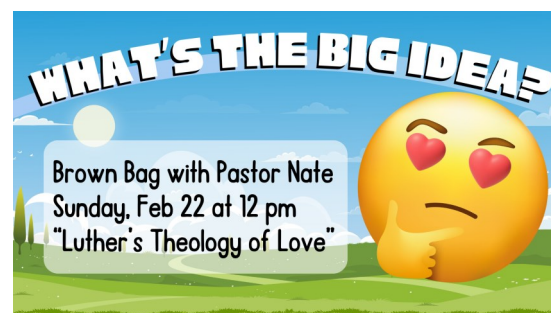
The Gospel of Matthew is placed first in the New Testament not because it was written first, but because of the importance given to this Gospel in the life of the church. Within this Gospel we have the Sermon on the mount and a clear call to think of the ethical considerations of being connected to Jesus. Join us each Sunday as we walk with Matthew and explore the impact this Gospel still has on Christians today. We'll meet between services in the conference room.

## Pastors Scripture Study

There is no better way to prepare for worship than to be in conversation with the scriptures. Your thoughts and insights will help enlighten the pastors' weekly sermons and prepare you to get more out of worship. We meet **each Wednesday at 11:00 am** in the fellowship hall.

## Pastor Jeff's One-Minute Devotionals

You can view these brief, thought-provoking videos online **at any time** <https://tinyurl.com/PrJeffDevotional>



## Resurrection Small Groups

Mary Kay Pinckney - women's group; **Sunday, February 15th at 6:30 pm**; Mary Kay's CR home

Email - [mkpink6\(at\)gmail.com](mailto:mkpink6@gmail.com); "Grace: A Bible Study on Ephesians for Women" by Keri Folmar

Donna Dennis - mixed group; **2nd & 4th Thursdays at 6:30 pm**; conference room

Email Donna: [donnakdennis88\(at\)gmail.com](mailto:donnakdennis88@gmail.com)

Rebecca Mary Martha Circle - women's group; **first Wednesday each month at 1:00 pm**

Email Lareen: [clgull57\(at\)yahoo.com](mailto:clgull57@yahoo.com) | conference room

JAM Study Group - women's group; **2nd Monday of each month**; conference room

Email Linda: [lhayward495\(at\)yahoo.com](mailto:lhayward495@yahoo.com); "Christianity's Family Tree"

## First Communion Instruction For Fourth Grade Students

**Sunday, March 22  
and  
Sunday, March 29  
1 - 2:30 pm  
(attend both sessions)**



Please register  
at [LCRMarion.org](http://LCRMarion.org)



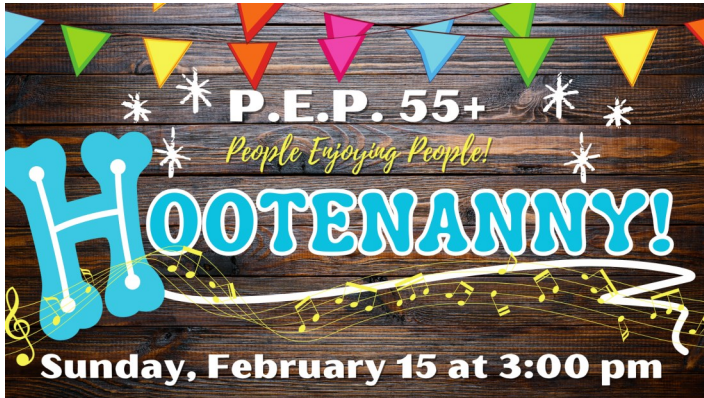
## First Communion - coming in March

Attention 4th grade families, It is almost time for first communion! If you have a 4th grade (or older) student who has not yet completed formal instruction for 1st Communion, you are invited to join us for communion classes this year on **March 22nd and March 29th**. More information to follow. First Communion will take place on Maundy Thursday (4/2/26).

# FELLOWSHIP

## PEP 55+ Hootenanny!

Please join us on **Sunday, February 15th at 3:00 pm** for an old fashioned Hootenanny, more recently called a sing-along. Songs from the 50s, 60s, and 70s will be featured, along with some old-time religion ones. Our host will be Jean Hammill. Feel free to invite friends and neighbors; light refreshments will be offered.



## LCR Book Club

We'll meet on **Tuesday, February 10th at 6:30 pm** to discuss "*Another Woman's Husband*" by Gill Paul 1997 - After a romantic proposal in Paris, Rachel and her fiancé, Alex, are in a cab when suddenly the car ahead crashes. They're stunned to learn Princess Di is in the car! By the wreckage, Alex finds an engraved heart pendant and gives it to Rachel to hold. The revelation of a long-forgotten link to Wallis Simpson leads Rachel to the truth behind a scandal.

Contact Mary to get on our email list; new people are very welcome! [jonmaryhajek\(at\)gmail.com](mailto:jonmaryhajek(at)gmail.com)

## Painting Group

Love to paint? Want to learn? Join us on the **1st & 3rd Tuesdays of each month at 6:30 pm** in the art room. This group is open to adults painting in a variety of mediums - acrylic, watercolor, oils, etc. If you have questions, or if you haven't painted before, please contact Evelyn: [ebeck\(at\)imonmail.com](mailto:ebeck(at)imonmail.com)

## Candy Bar Bingo

Free for all ages; invite friends and neighbors, too! Will meet in the fellowship hall on **Sunday, February 1st from 1:00 to 2:00 pm**.

## LCR Valentine's Breakfast

Round up all your sweethearts for a love-filled Valentine's potluck breakfast. We'll gather between services at 9:30 am on **Sunday, February 15th**. Everyone is welcome!



## Gatherings @ LCR

'Gatherings' is a place and time to hear and share stories and connect with others in our community. We have fascinating conversations on different topics every time. Join us **Friday, February 13th and 27th from noon to 1:00 pm**. Everyone is welcome and beverages and light snacks are offered. Email Mary with questions: [jonmaryhajek\(at\)gmail.com](mailto:jonmaryhajek(at)gmail.com)

## Walking Group

We walk **each Thursday at 10:00 am** at Lindale Mall. Make sure to get on our email list so you'll know where to meet us!

## Cribbage Group

Join us on **2nd & 4th Fridays at 1:15 pm** for a few games of cribbage. We are happy to teach you if you've never played before and non-members are always welcome.

## Wood Carvers & Yarn Crafters

Carvers and knitters/crocheters are currently on winter hiatus. Knitters group will resume in April and carvers in March. Feel free to contact John or Pam over the winter if you need supplies, patterns, or advice.

carving - [john1400\(at\)q.com](mailto:john1400(at)q.com)

knitting - [PamKacena\(at\)yahoo.com](mailto:PamKacena(at)yahoo.com)



# CONFIRMATION

In February, Confirmation students will be learning about baptism and confession. As part of their exploration, we'll have the kids talk with parents and guardians about faith in their own families.

## Baptism (part 1)

Family Focus:

Look at baptism photos or certificates together

## Baptism (part 2)

Family Focus:

Talk about daily forgiveness and grace

## Confession

Family Focus:

Practice saying "I'm sorry" and "I forgive you"

Confirmation  
Service  
5/24/26

# 7-12TH GRADE

## Sunday Fellowship

9:40-10:25 am in the YAC

7th to 12th graders gather **between worship services on Sunday** to share in a time of fellowship. Together we play games, talk about life, and make treats. You are invited and welcome to join us during any of our Sunday morning meetings.



# EDGE YOUTH

In January, EDGE students met regularly on Wednesday nights despite both cold and snow. We played games, discussed ways in which we find peace and cast away our anxieties, and took note of the light which guides us through the Epiphany Season. This month, we will spend time focused on the ways we love and experience love before entering into a season of Lenten reflection. EDGE is open for any high school aged students to attend. Come as you are, when you can! All are welcome!

**EDGE Youth - Wednesdays at 7:30 pm in the YAC**

## Upcoming Events

2/4 | EDGE in the YAC

2/11 | EDGE Valentine's Party & Love Dinner

2/18 | EDGE Ash Wednesday Service

2/22 | Sunday High School Fellowship in the YAC

2/28 | EDGE in the YAC

3/14 | EDGE at EWALU True North Games!  
(at Wartburg College)

If you would like to receive our regular high school ministry email updates, register for EDGE here:

<https://lcrmarion.org/ministries/youth-ministry.html>



# PRAYERS

## Those hospitalized recently:

Sharon Hill

## Those experiencing illness or surgery:

(LCR members) Larry Edwards, Joe Glogovsky, Pam Couser, Kristen Corrigan, Penny Moubry, Billie Lou Le Flore, Eloise Heppler

(family and friends) Melody Yost, Julie Biddle

## Those living in care facilities:

Bernadean Spilde (Closer Care), Larry Wogahn (The Views), Mary Durspek, Marge Dryden (Terrace Glen), Everett & Georgia Lehrman, Gary Young (Grand Living)

## Those who mourn:

Trudy Albaugh and family on the death of former LCR member, Wally Albaugh

**Please let the office know about prayer needs**  
or when you wish to have a name removed.

The names of friends and family who are dealing with illness will be listed for 2 months.

**Pastoral Care** - With rules about confidentiality at our hospitals, we will not know that you or your family member is sick or in need unless you contact the church office.

## Wartburg Rosenchor Ensemble at LCR

The Rosenchor "Choir of Roses," will be at LCR on **Saturday February 21, at 7:00 pm**, for a community concert. No tickets or admission charge. They will also be with us at **8:30 Worship on Sunday, February 22nd**.



"Rosenchor, or 'Choir of Roses,' is a small group of treble-voiced student musicians dedicated to achieving choral excellence for the purpose of serving our surrounding communities. Together, we are committed to leading from areas of individual strength to create a collaborative team that complements one another both musically and non-musically. The St. Elizabeth Chorale's mission of service and faith is reflected in all that we do. Rosenchor's musical tradition supplements the existing foundation of outstanding choral music at Wartburg College."

## Soup Suppers at LCR & Kairos, University of Iowa Campus Ministry

We hope you can be a part of our Lenten Soup Suppers here at LCR. If you would like to bring a soup to share (or a child-friendly dish), please sign up online or call the church office. As we enjoy a delicious soup supper together we encourage you to make an offering (it may be helpful to think of this as a way to give away what we would have normally spent on a dinner out) as a tangible good work of generosity. This year our Soup Offerings will go to Kairos Campus Ministry at the University of Iowa. A ministry of Lutheran Church of Hope in Iowa City, over 225 students gather weekly at Old Brick for worship, small group study and fellowship. "This grace-based community freely shares the soul-satisfying love of Jesus." Every student is welcome, no matter where they are on the journey of faith.

An average of 225 college students come to worship each Wednesday night at Kairos Campus Ministry (University of Iowa)





# STEWARDSHIP

## Treasurer's Report for December 2025

	<u>December</u>	<u>Year to Date</u>	<u>One Year Ago</u>
Receipts	\$ 89,461	\$1,005,419	\$ 882,588
Expenditures	\$ 81,456	\$ 917,929	\$ 792,600
<b>Cash Balances</b>	<b>12/31/2025</b>		<b>12/31/2024</b>
General Fund	\$149,661		\$184,247
Property Reserve	\$ 80,868		\$ 80,780
Savings	\$370,719		\$258,639

*Thank you for your faithful gifts in support of our budget.*

## Digital Giving

\* **Simply Giving** - Join 86 LCR members who give regularly through automatic drafts from their checking or savings accounts. You can elect to give weekly, monthly, or quarterly. Enrollment forms are available in the info rack in the gathering space.

\* **PayPal** - Click DONATE button on our website for online giving.

\* **Venmo** - Smartphone app for sharing money @LCRMarion



## Wee Wisdom Preschool

In January we learned about bears and other arctic animals. Afterwards we explored outer space with a space station and astronaut training!

We have opened enrollment for Fall of 2026. Please help us spread the word about this wonderful program for little learners. If you know someone with youngsters, please share this link - <https://lcrmarion.org/wee-wisdom-preschool/about-wee-wisdom.html>

# CHURCH COUNCIL

*Please reach out with questions or concerns.*

The Council met on Tuesday, January 20, 2026. December Secretary & Treasurer reports were approved.

**Treasurer:** Ended December with 10k surplus. 2025 giving came in at 103.5% of pledges. Facilities expenses in December driven by snow removal and new water heater. Motion passed to hire Clergy Financial Resources to take over payroll processing, at a monthly cost savings to us.

**Pastor Jeff:** LCR worshipped ~920 people on Christmas Eve. Lenten theme will be "On Our Way Rejoicing: a Lenten Pilgrimage." Ash Wednesday is February 18th. Lenten offering to go to Kairos, a Lutheran college ministry at U of I. Fall speaker this year will be Dr. Robert Cargill, a Biblical archaeology expert from U of I.

**Outreach:** Thanks to all who came out to Bingo in January! Looking forward to Bingo in February, and a Valentine's breakfast between services on January 15th.

**Property:** Getting another quote for water softener; looking ahead to thinning some trees on the property.

**Social Concerns:** Reverse Advent donations delivered to recipients. Souper Bowl of Caring underway.

**Governance:** Motion passed to approve updated employee manual.

**Living Legacy:** Sending out a mailing to congregation in February. Looking ahead to fall speaker.

**Old Business:** Site Master Plan update - Group will meet once more to decide which firm to recommend.

**Annual Meeting planning** - Council members will need to be present to assist with sign-in and serving snacks.

**New Business:** Council Retreat - February 21. **Nominating Committee Update** - Ken Turnquist, Heather Grice, and John Madland are nominees for Council; Sally Immerfall for nominating committee; Evelyn Beck for auditing committee; Kristen Corrigan for Living Legacy.

**Next meeting:** Tuesday, February 17, 2026

Agenda items should be submitted by 2/9/26.

Print copies of council minutes and treasurer's reports are available in the church office binder.

LUTHERAN CHURCH  
of the RESURRECTION  
3500 - 29TH AVENUE  
MARION IA 52302  
(address service requested)



**Ash  
Wednesday  
February 18**

Morning Imposition of Ashes  
7:30 - 8:30 am  
Simple Soup Supper  
5:00 pm  
Ash Wednesday Worship  
(includes imposition of ashes)  
6:00 pm

NON-PROFIT  
ORG.  
U.S. POSTAGE  
PAID  
Marion, Iowa  
Permit #11



Sign up to bring soup or help serve >>>

WARTBURG'S  
ROSENCHOR  
CHOIR  
*in concert*  
SATURDAY, FEBRUARY 21  
7:00 PM  
LUTHERAN CHURCH  
OF THE  
RESURRECTION

**SIMPLE  
SOUP  
SUPPERS**

Wednesdays during Lent @ 5:00 pm  
Starts Ash Wednesday, February 18  
Sign up to help at [LCRMarion.org](http://LCRMarion.org)

**CONTACT US!**

office hours:  
**Monday - Friday,**  
**9:00 am - 4:00 pm**  
phone: 319-377-4689  
email: [office\(at\)lcrmarion.org](mailto:office(at)lcrmarion.org)  
fax: 319-377-4680

[www.lcrmarion.org](http://www.lcrmarion.org)

Pastor Jeff Frohner - [PastorJeff\(at\)lcrmarion.org](mailto:PastorJeff(at)lcrmarion.org)  
Pastor Nate Montover - [PastorNate\(at\)lcrmarion.org](mailto:PastorNate(at)lcrmarion.org)  
Childrens/MS Ministry: Jessi Lau - [childrens\(at\)lcrmarion.org](mailto:childrens(at)lcrmarion.org)  
HS Ministry: Hannah Sh. Powell - [youth\(at\)lcrmarion.org](mailto:youth(at)lcrmarion.org)  
Contemp. Worship: Ralph Kendrick - [worship\(at\)lcrmarion.org](mailto:worship(at)lcrmarion.org)  
Office Manager: Kim Benser - [business\(at\)lcrmarion.org](mailto:business(at)lcrmarion.org)  
Emily Carson - [secretary\(at\)lcrmarion.org](mailto:secretary(at)lcrmarion.org)  
Cari Redondo - [communications\(at\)lcrmarion.org](mailto:communications(at)lcrmarion.org)  
Lorie Smith - [bookkeeper\(at\)lcrmarion.org](mailto:bookkeeper(at)lcrmarion.org)  
Custodians: Dave Steifner, Dave Cosgrove

