

# Cross



# Talk

Lutheran Church of the Resurrection

Volume 53: Issue 2 February 2012



## Annual Meeting Results

The annual meeting of Lutheran Church of the Resurrection was held on Sunday, January 29 at 12:15 in the worship room. Those elected to various positions include:

- ♦ Church Council – Susan Conway, Barb Hazelton, Linda Sundermeyer
- ♦ Auditing Committee – Joan Meyer
- ♦ Nominating Committee – Chad Prall
- ♦ Trust Fund Committee – Brian Bartz, Mike Almasi

We have received over 120 congregational vision surveys which have been tabulated. The Vision Team will review the data and identify some areas of ministry that can be formulated into new goals for the next 5 years. The Church Council will meet with John Clark of the James Company at the Council retreat in February to further define these new goals.

A 2012 budget of \$663,080 was approved at the annual meeting. The new 2012 budget includes the salary, pension, and health coverage for Pastor Blair A'Hearn, which had previously been covered by the Vision Fund.

There is a sizable gap between our initial estimate of \$630,000 for 2012 income and the new budget. In recent years we have under spent the annual budget by an average of ~\$17,500. We assume the same pattern will hold true in 2012. One way you can help bridge the gap is by being faithful in your giving to Resurrection. Try Simply Giving, the electronic funds transfer way of supporting LCR. We received 1/3 of our total gifts to the General and Building Funds in 2011 from Simply Giving,

## Rejoice-Envision-Celebrate Appeal Update

As of January 22, we have received:

- **262** commitments for our 2012 General Fund ministries totaling **\$482,273**
- **192** commitments for the 2012-2014 Building Fund totaling **\$471,164**

Thanks to all who have turned in their commitment cards. If you haven't yet responded, we need your support! There are extra commitment cards online at [www.lcrmarion.org](http://www.lcrmarion.org) or at the Welcome Center.

Peace,  
Pastor Dennis

## Inside This Issue

Adult Faith Development .....	5
Council News.....	11
Fellowship .....	8
Ministry.....	2
Prayers.....	10
Stewardship.....	11
Sunday School .....	4
Wednesday Youth Education .....	9
Worship .....	3
Young Adults .....	8



# Ministry

---

## Time and Talent

We will be filling out Time and Talent sheets on *Sunday, February 12th*. As you decide what gifts you will use next year, remember what Peter said in Chapter 4, verses 10-11. "Each of you should use whatever gift you have received to serve others, as faithful stewards of God's grace in its various forms. If you speak, you should do so as one who speaks the very words of God. If you serve, you should do so with the strength God provides, so that in all things God may be praised through Jesus Christ. To him be the Glory and the power for ever and ever. Amen."

The people of LCR have amazing gifts and we thank all of you for using them to make this place welcoming to all who come in the doors. Please read the Time and Talent sheets carefully and choose the ones that fit your talents. If you do not fill out a new sheet, we will assume that you want to do the same as last year. But we urge everyone to try at least one new item a year - you will find talents you did not know you had!

## Lenten Suppers

Our suppers begin on *Ash Wednesday, February 22* at 5:30 pm. IGNITE Young Adult group will kick us off, followed by E.D.G.E. high school youth on 2/29, and Wednesday Night Live on 3/7. If any other groups would like to prepare and serve a meal for the congregation as a fundraiser for their own ministries or to benefit a community ministry, please pick up a fundraiser request form at the church office. Available dates are March 14, 21, and 28. Meals will be served from 5:30 until 7:00 pm.

## CrossRoads Mission

CrossRoads continues to serve larger and larger numbers of people. Please continue with the amazing giving we have seen from this church. You are helping a very large number of people!

## Annual Report

Thanks to the following people who "braved the storm" to assemble our latest Annual Report:  
Andy Carter, Glenn Jensen, Richard & Linda Sundermeyer, Rick Siefken, Marcie Vogel, Jan Petrick, Darlene McGovern, Orv & Jo Alitz

## Blood Drive

Resurrection will be hosting other Marion Lutheran churches on *Thursday, February 9* from 1:30 to 6:00 pm. Please contact Bob Wolter (377-5126 or bob-wolter@q.com) to sign up. There is an urgent need right now for 'O negative' blood type, so if you have that type please make a special effort to sign up. If giving blood is not your thing, we also need volunteers to provide and serve cookies.

## Personal Care Kits

Resurrection's ELCW Study Group will be assembling kits for April shipment to Lutheran World Relief. These consist of: 1 light-weight bath towel, 2 bars of soap, 1 comb, 1 tooth brush, and 1 metal nail clipper. Please check our display on the gathering space table and pick up a detailed listing of needed items. Donations can be placed in the blue tub under the coat rack. Thanks for your contributions!

## Pastoral Relations Committee

This team of six members meets with each pastor from time to time as a sounding board for the pastors, a focal point for pastor appreciation events, to be involved in pastoral salary recommendations, and provide performance feedback. In an effort to help them grow and relate to the congregation, we will be conducting a peer group review in the next few weeks. Some of you will be contacted by a pastoral relations team member and asked to fill out an assessment of their core skills. Please fill out and return it promptly. Both the team and the pastors see this as a way to improve their service to you.



**Registration for the 2012-13  
school year will open  
on February 13th**

Please tell your friends/neighbors!

Contact Shelly Beaver or Michelle Heidelbauer  
[www.weewisdom.lcr@gmail.com](mailto:www.weewisdom.lcr@gmail.com) or 377-4689

# Worship



## February 5 & 8: The Message

Many people today are confused by what the core message of Christianity is. One group says it is about being of strong moral character. Another group suggests it is about practicing a certain form of worship. The perceptions are many and varied. In this passage from Mark's gospel Jesus tells and shows his disciples what that message is, asserting that this is the very thing he came to do.

## February 12 & 15: Trading Places

We often think of Jesus as a servant when he washes feet or hangs on the cross. But in today's reading we see Jesus trade places with a man suffering from leprosy so that the man could be freed from the power of his illness.

## February 19: From Mountain to Mission

On this Transfiguration Sunday, Jesus' divinity is fully revealed on a high mountain, where a voice from the cloud proclaims, "This is my Son, the Beloved; listen to him." As the season of Lent begins, we can renew our lives as disciples by listening to him speak through devotions, worship, and serving others.

## February 26: The Time has Come

Jesus came to Galilee proclaiming that God's reign on earth had begun. His victory over the powers of evil in the wilderness was one of the signs that God's kingdom was being ushered in. Today we are encouraged to change the way we think and believe the good news.

### Average Worship Attendance

	2012	2011	2010
January	483	511	534
Year to Date	483	511	534



### Lenten Worship

Holden Evening Prayer  
Every Wednesday at 6:00 & 7:00 pm  
February 29 - March 28

### Lenten Suppers

Serving from 5:30 - 7:00  
In the Fellowship Hall

## Ash Wednesday Worship

6:00 & 7:00p



Weds. February 22, 2012  
Imposition of Ashes  
Holy Communion

Begin your Lenten observance by joining in confession, worship and the sharing of Communion with other disciples.



# SS Disciple Ship

9:45-10:45 Sunday School Program

Tammy Evans: SS Disciple Ship Coordinator

tammy@lcrmarion.org

## SUMMER'S COMING!

### MARK THESE DATES ON YOUR CALENDAR

**May 20** Last day of Sunday School

**June 12—15** Preschool VBS(includes Kindergarten)

**August 6-10** Elementary Daycamp (K-6)

Watch for further information in the bulletin, website, and next month's Crosstalk!

## EWALU REGISTRATON HAS BEGUN!

**2/19** Deadline to turn registrations into the church.

**2/28** Early Bird Registration Deadline (for those registering on-line or mailing it in on your own.) This is a savings of \$40 for full week camp and \$10 for mini-camp.

\$100 scholarships for full week campers and \$50 scholarships for mini campers will be available again this year. If you register on-line or by mail please email Jill - jill@lcrmarion.org to receive a scholarship and have your child listed as a LCR camper. If you do not need a scholarship, please indicate that on the email to Jill.

## SS Disciple Ship

Preschool & Kindergarten students enjoyed a "tour" one day as they learned how Joseph took his family from Bethlehem to Egypt then to Nazareth. All kids in a rotation unit about Jesus' life after he was born to when he faced temptation in the Wilderness.



Next unit begins Feb 19th.

## 1ST COMMUNION CLASSES

Pastor Dennis will be preparing students to receive their first communion with classes on Wednesday, March 7, 14, 21, 28 from 7:45 - 8:30, or a one-time class on Saturday, March 31 from 9-12.

This includes 4th graders and any 5th or 6th grade students who haven't had this instruction.

A letter will go out in mid-February.

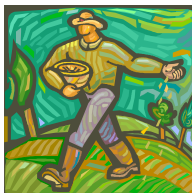
## Praise Island

February 5—The Houses Parable

February 12—The Sower Parable

February 19—The Good Samaritan Parable

February 26—The Lost Sheep Parable



Everyone likes a good story and Jesus used stories or parables to teach his message. He used stories about everyday life to help people understand the true meaning of the story. We are going to spend the month of February looking at some of these familiar parables and discover the meaning behind the story.



# Praise Island

11:00 - 12:00 Sunday School Program

Jill Hansen: Praise Island Coordinator

jill@lcrmarion.org

# Adult Faith Development

---

Growing in faith is a life-long journey

## Adult Faith Development

### Sunday Classes

9:45 a.m.

#### **How To Talk So Kids Will Listen and Listen So Kids Will Talk**

You Can Stop Fighting With Your Children! This reading and discussion class is based on the bestselling book that will give you the know-how you need to be more effective with your children. The class is facilitated by Hillary Prall, a school psychologist.

#### **Conquering Stress**

This class intends to help you deal with stress in in practical and spiritual ways using a variety of methods. Wayne Brandt, an experienced facilitator and manager at Rockwell leads this class.

#### **Adult Bible Study**

The Gospel of John is on the docket for the new year. Charlie Clauss facilitates this class .

6:00 p.m.

#### **Financial Peace**

This class is a proven winner. Offered this past fall, the 13-session course received great reviews. Financial Peace gives participants a new perspective on money. It will teach you how to prioritize, organize, and make value based decisions about finances. You will learn the snowball method of eliminating debt, step-by-step cash flow planning and more. Put into practice, it will definitely influence your financial world for the better. This course will run for 12-13 weeks, beginning Sunday, February 5. Meeting time is 6-8 pm. Those cost of the materials and life time resources is \$100. Childcare will be available.

## Family and Church Lenten Devotions

The people of LCR are invited o come together for **A Season of Devotion** in Lent 2012. As disciples of Christ, we are called to a practice of devotion, both personal and communal. Centuries old, it is one that typically involves reading scripture, reflection and sharing insights with others. At LCR individuals and families are encouraged to be involved this Lent on two levels.

During each week in Lent, *beginning Ash Wednesday, February 22*, we encourage each household to take 10 15 minutes at meal time once a day or whatever days are possible. You are invited as a family to read the daily devotion from the family oriented devotional booklet, **“With God, All Things Are Possible”**, answering the questions and sharing simple reflections associated with each day’s Bible reading. Important to this practice is encouraging each person no matter what their age to share openly his or her own reflections with no critique from others. The devotional booklet will be available in the gathering space beginning Sunday, February 5. To help offset the cost families may contribute \$1 per booklet.

In addition, on **Sunday mornings at 9:45** during Lent, the only Adult Faith Development offering (in addition to Charlie’s class) will be table devotions in the fellowship hall. At each table will be the sermon reading for that Sunday and a few simple questions for each table to reflect upon and share discussion. To help facilitate that discussion a current small group leader, member or leader in training will be at each table. This activity may last anywhere from 10 to 30 minutes, depending the individuals at each table.

# Fellowship

## Chili Challenge & Sledding Party

Are you ready for a delicious day of chili-tasting and some outstanding sledding at Squaw Creek Park? Join in the fun on *Sunday, February 12*. Doors will open at 1:30 pm, chili-tasting begins at 2:00. We'll need some volunteers to make this event a reality: 'Chili Challengers' to make and enter their chili; and helpers to do small but important tasks prior to and on the day of the challenge. Contact Michelle Shaw ([michelle\\_shaw@southslope.net](mailto:michelle_shaw@southslope.net) or 329-2984) to sign up your chili or help out in other ways.

## Empty Nesters

We will meet *Saturday, February 18* at Smuggler's Wharf, which opened last September in the Czech Village. Seafood, chicken, and steak are on the menu. A sign-up sheet is posted on the entryway bulletin board for reservation purposes. The address is 95 - 16th Ave SW and our reservation will be for 6 pm. Contact Susan Conway if you have further questions ([drskconway@msn.com](mailto:drskconway@msn.com) or 447-1165). Empty Nesters, a time for fellowship, is open to all adult members of Resurrection.

## Monthly Bridge Group

Our next gathering will be *Friday, February 3* at 1 pm in the café. Contact John Knodle for more information (551-8162).

## LCR Scrapbookers

We'll meet on *Friday, February 3* beginning at 6 pm. Bring your photos, supplies, and ideas and join in on the fun! Contact Donna Dennis with questions ([odonna@netins.net](mailto:odonna@netins.net) or 854-7752).

# IGNITE

## Young Adult Ministry

### Eat For Orphans!

In February, we will be preparing and serving the Lenten meal for Ash Wednesday for our service event. All of the proceeds from the night will go to support the children at Barcelona Church and Orphanage, Unakho Children's home in Cape Town, South Africa. This is the same orphanage that we visited and served at last March and that many of you supported. Please email Carter if you would be willing to bring a food item and/or to help prepare, serve, and clean up the meal.

**Carter Moore**

**Director of Youth & Young Adult Ministries**

[carterm@lcrmarion.org](mailto:carterm@lcrmarion.org)



## JAM Bible Study

Our women's evening bible study will meet on *Monday, February 13* in the church lounge at 7 pm. Currently we're progressing through a study of the Holy Spirit. For further information, contact Marcie Vogel at 377-2788. (JAM stands for "Jesus And Me!")

## ELCW Bible Study

Our women's afternoon bible study will meet on *Wednesday, February 1* at 1 pm in the fellowship hall. Join us for discipleship and fellowship. Contact person is Harriet Van Gilder (377-2490) and new participants are always welcome!

# Wednesday Youth Education

Wednesday Night Live: Grades 3, 4, & 5 meeting from 7- 8 pm

**Feb. 1st—Game Night**

(Bring your favorite game to share. Bring a friend. Bring a parent or grandparent. Fun for everyone!)

**Feb. 8th—Valentine's Party in Fellowship Hall**

**Feb. 15th—Displays for Lent Meal (Brainstorming and work in groups)**

**Feb. 22nd—NO WNL (Ash Wednesday)**

**Feb. 29th— Displays for Lent Meal (Finish up and talk about meal assignments)**

**Mar. 7th— SERVE LENT MEAL**

We will be using the profits from our Lent meal this year to purchase items for CrossRoads Mission. We will do a group shopping trip to purchase these items in April. More details on the meal and the shopping trip to come.

Contact Jill Hansen with questions about Wednesday Night Live  
jill@lcrmarion.org 319.377.4689



## Confirmation & Middle School: Grades 6, 7, & 8

**February 1 - Large Group:** How to Locate a Life - We begin a new unit on finding and using our gifts & abilities to serve others.

**February 8 - Small Groups:** Do something crazy fun with your small group.

**February 15 - Large Group:** Finding your Spiritual & Life Gifts

**February 22 - Ash Wednesday:** Worship at 6:00 or 7:00pm

**February 29 - Lenten Worship:** Confirmation students need to attend at least five (5) Lenten Worship Services. It's a great time to catch up on Worship Notes!



**GRADES 9-12**  
**7-9 pm in the YAC**

### February Schedule:

**February 1:** Service Night at Summit Pointe

**February 8:** Large/Small Group Night in the YAC 7-9p

**February 15:** F.F.F. Night-Bowling at Marion Bowl 7-9p! Only \$5! Bring your friends!

**February 22:** ASH WEDNESDAY: Student Life Series starts! **NOTE: 8-9p during Lent**

**February 29:** Student Life Series 2 **NOTE: 8-9p during Lent**

*Carter Moore*, Director of Youth & Young Adult Ministries ~ carterm@lcrmarion.org

**Attention High School Seniors** - Biderman Scholarship applications for graduating seniors are available on the entryway bulletin board. Completed applications and attachments must be postmarked on or before *February 17*.

# Prayers



## Prayers are Requested for:

### Those hospitalized in January:

### Those dealing with, or recovering from, illness or surgery:

*(Resurrection members)* Phyllis Bishop, Matt Cook, Dick Slaymaker, Chris Cooper, Aloha Franklin, Cathy Kimball.

### *(Family and friends of our members)*

Michael Penniman, Nancy Cox, Elgin Strobel, Spencer Cleveland, Christi Dalecky, Karol Daisy, Ray Hansen, Madeline Novalis, Sharon Parker, Mike Wilson, Betty Hannagan, Linda Crossett, Ernie Gregoire, Paul Vezina, Jordon Thompson, Claire Wallace, Judy Law, Darlene Biedermann, Harold Parks, Leslie Petersen, Don Schantz, Bev Zester, Helen Zester, Helen Pugliese, Wes & Chloe Pickens, Bud Jeffrey, Dean Lyon, Lori Hahn, Lori Lange.

**Those living in care facilities:** Edna Miller (*Willow Gardens*), Winnie Bulicek (*Colonial Manor of Amana*), Herbert Lehrman (*Hiawatha Care Center*), Bernice Harstad (*Keystone Cedars*), Dorothy Luedtke (*Linn Manor*), Virginia Smart & Fran Veatch (*Winslow House*).

**Those in military service:** Todd Kopperud, Kyle Cirkl, Eric Krause, Matthew Courter, Nate Hatch, James Vick, Adam Eilers, Andrew Zimmerman, Caleb Redell, Alex Bruce, Jonathan Alместica, Kyle Harding, Todd Christopherson, Ashley Parker, Nicholas Eilers, Brian Rose, Nick Thompson, Matthew Clark, Joe Hollister, Garrett Wood, Jason Sams, Brad Kieilty, Anthony Martin, Matt Carson.

### Those who rejoice:

- ◆ Deanna Harding on the birth of great-grandson, Raymond Allen Harding, on Dec. 29th.
- ◆ Glenn & Kristin Varner on the baptism of Kristie Lynn Varner on Jan. 1st.
- ◆ Jim & Cara Hocking on the baptism of Beckett James Hocking on Jan. 15th.
- ◆ Keevan & Tanya Simmonds on the baptisms of Blake & Beckham Simmonds on Jan. 15th.

### Those who mourn:

- ◆ Jan Petrick, Nancy & Mike Almasi and family on the death of Ken Petrick on 12/31.
- ◆ Kara & Jay Gillund on the death of Kara's father, Vernon Lindfors on Jan. 5th.
- ◆ Edna Miller on the death of her niece, Wendy Jensen, on December 15th.

*Please let the office know about prayer needs or when you wish to have a name removed.  
The names of friends and family who are dealing with illness will be listed for 2 months.*

### Special note for 2011 Giving Statements

Please review your year end giving statement carefully. We believe all of the data has been restored after the failure of the computer hard drive. However, the best check of our donation records is examination by YOU the contributors.

# Stewardship

## Treasurer's Report for December 2011

	<u>December</u>	<u>Year to Date</u>	<u>One Year Ago</u>
<b>General Fund Receipts</b>	<b>\$82,716</b>	\$611,062	\$598,927
<b>General Fund Expenses</b>	<b>\$56,174</b>	\$604,175	\$594,231
<b>Cash Balances</b>	<b><u>12/31/2011</u></b>	<b><u>12/31/10</u></b>	<b><u>12/31/09</u></b>
<b>General Fund</b>	<b>\$18,663</b>	\$ 9,922	\$ 5,226
<b>Clearing Accounts</b>	<b>\$56,267</b>	\$162,240	\$33,539
<b>Building Fund</b>	<b>\$46,577</b>	\$ 34,690	\$20,415

## 2009-2011 Capital Appeal Results

Our "Sharing Our Blessings, Living Our Faith" capital appeal wrapped up on December 31 with these results:

- ◆ Total giving over 3 years- \$483,883
- ◆ Amount pledged- \$547,352
- ◆ Given toward pledges- \$451,152
- ◆ % of pledges received as cash- 82.4%
- ◆ Over \$48,000 was given in tithes to Ewalu and Crossroads Mission over the 3 years



## General Fund Update

Thanks to some very generous gifts in the last week of December, we ended the year with a General Fund checking balance of \$18,663. Our 2011 receipts of \$611,062 went up 2% (+\$12,135) over 2010 receipts. Our 2011 expenses of \$604,175 were \$18,000, or 3%, under the 2011 budget of \$622,558.

Here are some other 'fun facts':

- ◆ Total 2011 gifts to LCR in all categories were over \$871,000.
- ◆ Simply Giving EFT (Electronic Funds Transfer) gifts were over \$223,000 to General and Building Funds.
- ◆ PayPal gifts from our website were over \$11,000.
- ◆ 99.4% of General Fund pledges were received as cash in 2011.
- ◆ Thanks to everyone for your generous support of LCR in 2011!

# Church Council

The Church Council met on Tuesday, January 17 at 6 pm. The secretary's, treasurer's, and pastors' reports were approved. The General Fund balance on December 31 was \$18,663.

**Approval Items:** The Budget Team recommended a 2012 General Fund budget of \$662,830, which was increased to a final amount of \$663,080. This compares to \$622,558 one year ago. The difference is mainly from moving Pastor Blair's salary, health coverage, and pension costs from the Vision Fund to the General Fund. All staff (pastors, program, support, and music) were granted 2% raises for 2012. 2012 housing allowances for the pastors were also approved.

**Discussion Items:** The Nominating Committee has finished their work and submits the following candidates to the Annual Meeting: Susan Conway, Barb Hazelton, Linda Sundermeyer (*Council*); Joan Meyer (*Auditing Committee*); Chad Prall (*Nominating Committee*); Brian Bartz and Mike Almasi (*Trust Fund Committee*). Their pictures and bios will be posted on the bulletin board before the annual meeting.

The Fund Appeal totals through 1/4 were given. The General Fund totals are \$478,313 from 259 giving units. This compares to \$473,413 in 2011 and \$471,995 in 2010.

The Council retreat will be on Saturday, Feb. 18 with John Clark in attendance to help interpret Vision Team results. The 2012 Council will be installed on Sunday, Feb. 5.

Copies of the minutes and treasurer's reports are available in the church office.

## Treasurer Position Opening

Christy Brandt is finishing up her service as our treasurer on March 31. The position will be posted on the entryway bulletin board in early February, with application forms available in the office. The annual salary is \$4,058. Evelyn Beck, our office manager, works with the treasurer in preparing bills and invoices for payment. The treasurer attends monthly Council meetings on 3rd Tuesday nights.

LUTHERAN CHURCH  
of the RESURRECTION  
3500 - 29TH AVENUE  
MARION IA 52302

*(Address Service Requested)*

NON-PROFIT  
ORG.  
U.S. POSTAGE  
PAID  
Marion, Iowa  
Permit #11

---

## Contact Us

Church office hours: Monday – Friday, 9 am – 4 pm  
Phone: 319-377-4689      Fax: 319-377-4680

-----  
Pastor Dennis Johnson - dennis@lcrmarion.org  
Pastor Kevin Jones - kevin@lcrmarion.org  
Pastor Blair A'Hearn - blair@lcrmarion.org  
SS Disciple Ship Coordinator - Tammy Evans, tammy@lcrmarion.org  
Praise Island & WNL Coordinator - Jill Hansen, jill@lcrmarion.org  
Youth & Young Adult Coordinator - Carter Moore, carterm@lcrmarion.org  
Secretaries - Anne Armstrong & Emily Carson, office@lcrmarion.org  
Office Manager - Evelyn Beck, evelyn@lcrmarion.org  
Volunteer Coordinator - Marcia Edwards, marcia@lcrmarion.org  
Custodian - Pat Knight, p.knight@mchsi.com

## Online

follow us on  
 

[www.lcrmarion.org](http://www.lcrmarion.org)